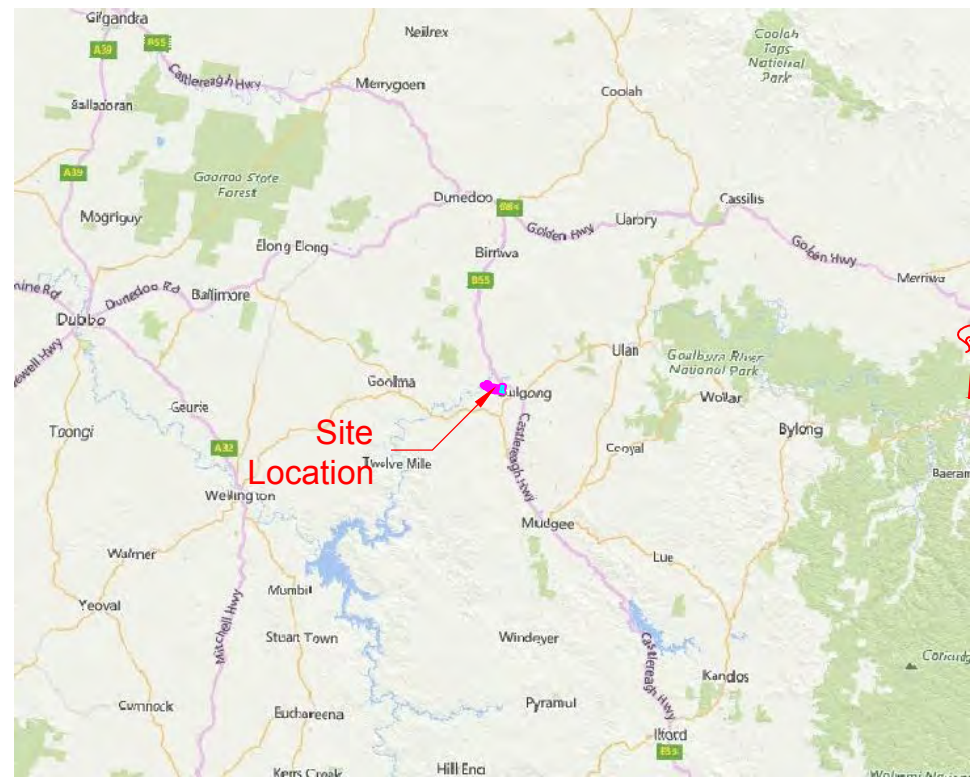
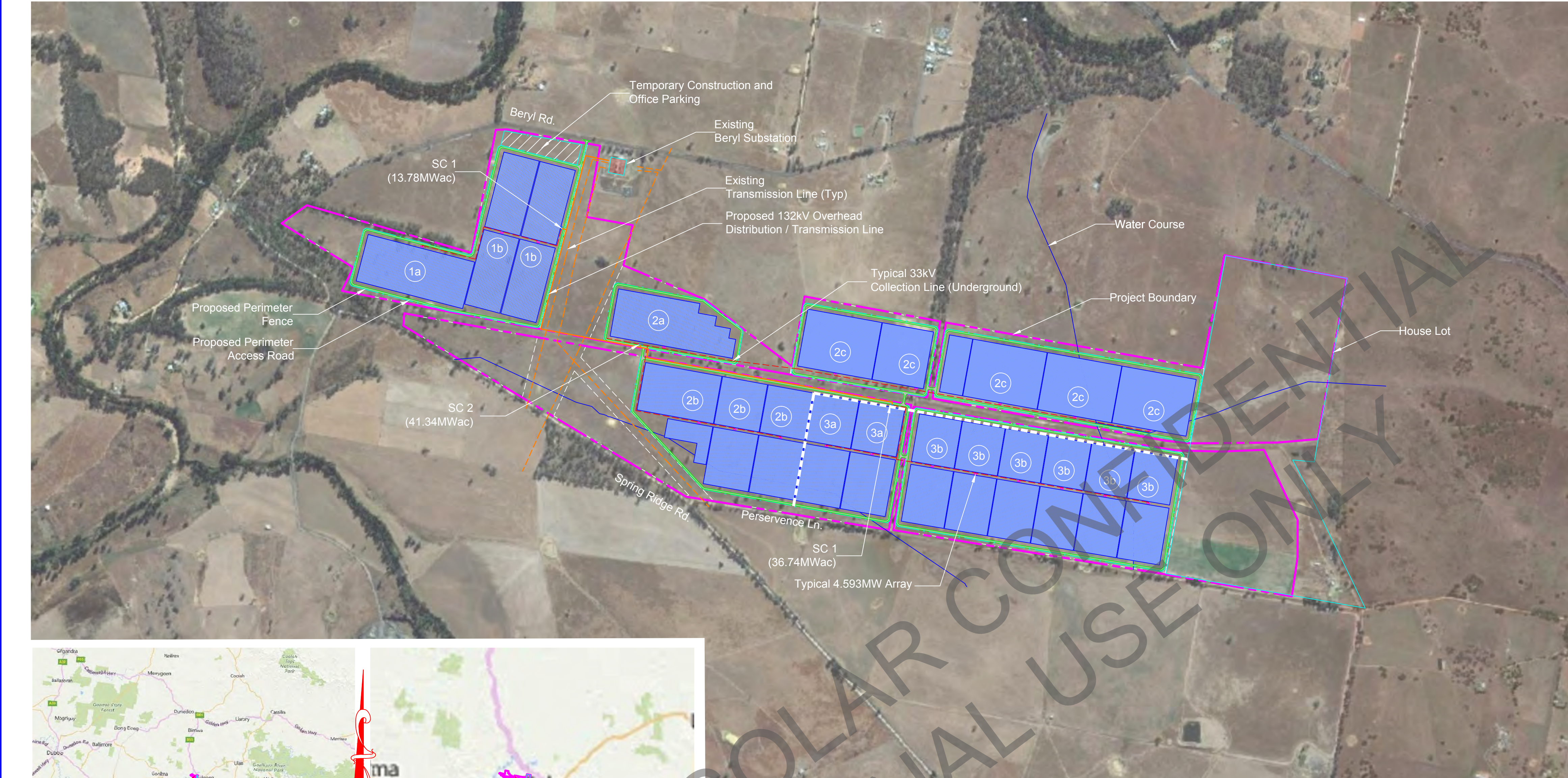


APPENDIX B PROPOSAL MAPS AND DRAWINGS

B.1 ORIGINAL LAYOUT

B.2 REVISED LAYOUT (TAKING INTO ACCOUNT CONSTRAINTS)

Y:\FS_Projects\FS Site Development\First Solar AU\Beryl Solar Plant\Active Drawings\Beryl SD-100-T.dwg FS116303 Oct 28, 2016 - 11:10am



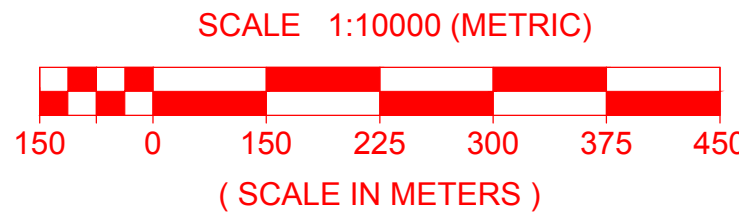
Country Map
Scale NTS



Key Plan
Scale NTS



Site Development Plan
Scale 1:10 000



Legend:

- Project Boundary
- AC Elec. Collection Line (Underground)
- AC Elec. Collection Line (Overhead)
- AC Elec. Distribution / Transmission Line
- Existing Distribution / Transmission Line
- Perimeter Fence
- Proposed Access Road (Dirt)

Beryl Solar Plant

Beryl, New South Wales, Australia

Product Offering

TBD

Project Developer/Owner Operator

First Solar

Project Site Description

302.03 ± Hectare Site
± Hectare Array
Latitude 32°21'26" S
Longitude 149°28'17" E
Elevation 420 m



PROFESSIONAL ENGR.

Beryl Solar Plant
Beryl
New South Wales
Australia, Australia

| REV | DATE | REVISION DESCRIPTION | BY | CHK | APP |
|-----|----------|---|----|-----|-----|
| A | 10-28-16 | Conceptual Design - Tracker Mounting System | DK | JH | JH |

| | |
|-------------|---------------------|
| FS JOB #: | 0000-0000-00 |
| PROJ. DSGR: | Daiva Kinneman |
| PROJ. ENGR: | |
| PROJ. MGR: | |
| PROJ. DIR: | John Hartelius P.E. |
| SCALE: | AS NOTED |

SHEET TITLE

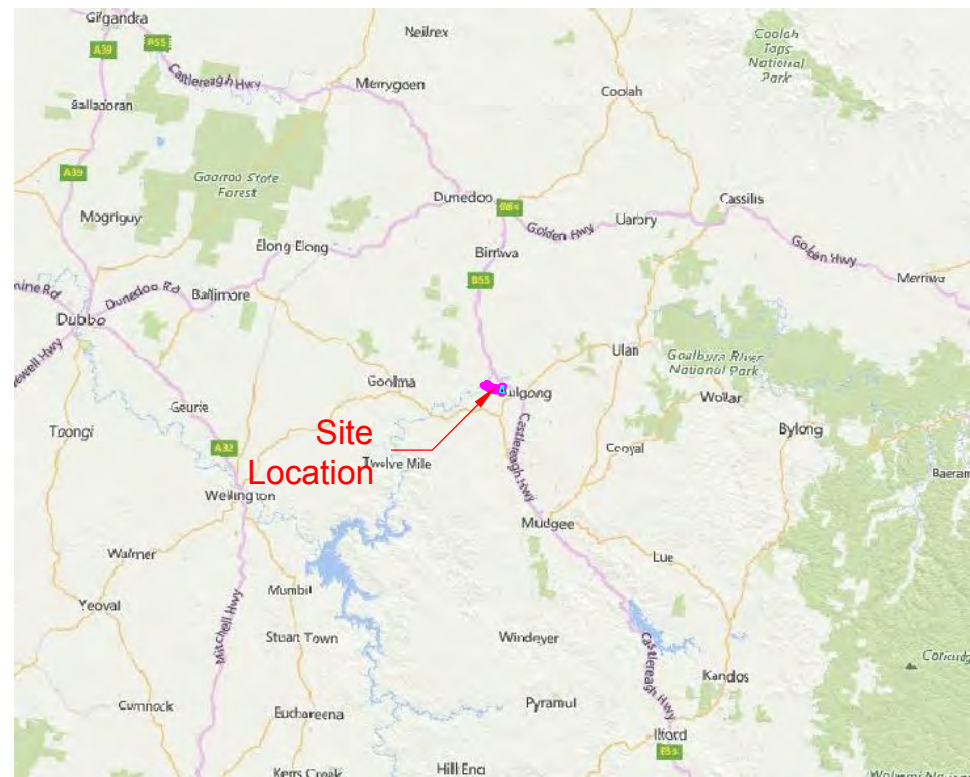
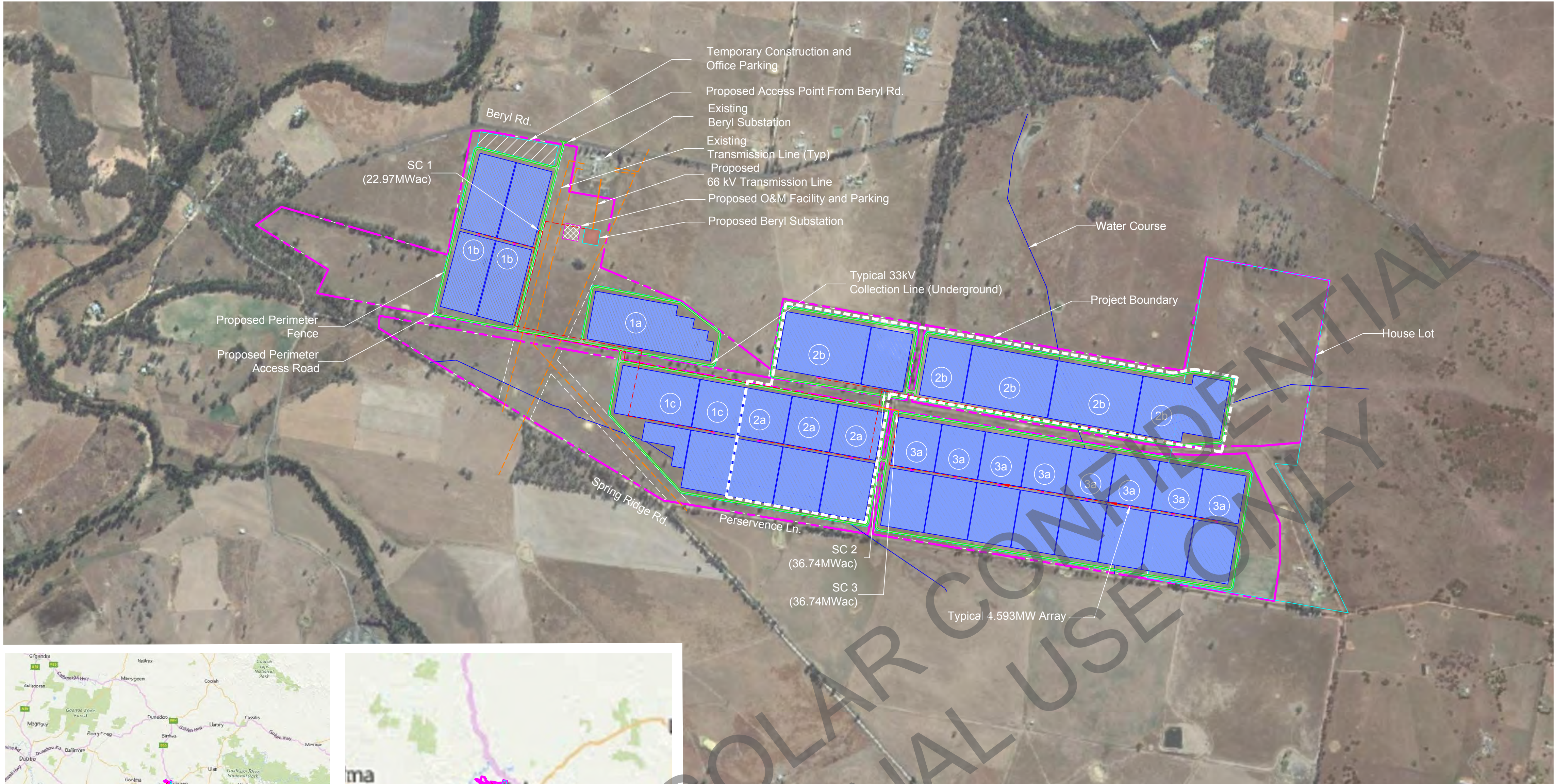
Site Development Plan

SD-100-T
SHEET 1 OF 1

THIS PUBLICATION CONTAINS VALUABLE PROPRIETARY AND CONFIDENTIAL INFORMATION OF FIRST SOLAR, INC. (FIRST SOLAR) WHO RETAINS ALL COPYRIGHT RIGHTS TO IT UNDER U.S.C. SECTION 106 AND IS PROTECTED BY U.S. AND INTERNATIONAL LAW. ANY REPRODUCTION, PREPARATION OF DERIVATIVE WORKS, DISTRIBUTION, PUBLIC PERFORMANCE OR DISPLAY, DISCLOSURE, AND/OR USE OF ALL OR ANY PORTION OF THIS PUBLICATION IN ANY FORM OR MEDIUM WITHOUT SPECIFIC WRITTEN AUTHORIZATION FROM FIRST SOLAR IS STRICTLY PROHIBITED.

| Site Plan Data Source | |
|--|--|
| Feature | Description |
| Boundary | Beryl PV Site KMZ |
| Coordinate System | Map Grid of Australia Zone 55, using GDA94 datum |
| Topography | |
| Hydrology | |
| Wetlands | |
| Geotechnical | |
| Environmental Constraint | |
| THIS PRINT IS DESIGNED FOR 24" X 36" PLOTTING | |
| THIS SITE DEVELOPMENT PLAN IS PRELIMINARY AND SUBJECT TO REVISION BASED ON, AMONG OTHER THINGS, CHANGES IN PROJECT SCHEDULE, TECHNOLOGY, AND/OR SITE SPECIFIC CONSTRAINTS. | |
| THIS PRINT IS NOT TO BE USED FOR CONSTRUCTION UNLESS NOTED AND SIGNED OK FOR CONSTRUCTION ABOVE LAST REVISION. | |

Y:\FS_Projects\FS Site Development\First Solar AU\Beryl Solar Plant\Active Drawings\Beryl SD-100-T.dwg FS116425 Mar 17, 2017 - 3:13pm

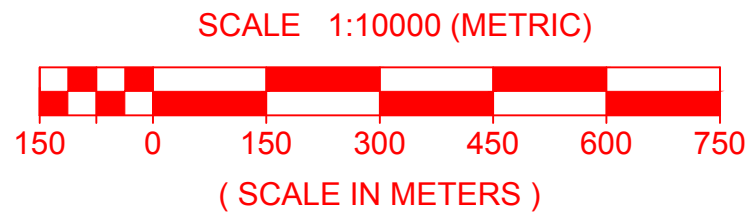


Country Map
Scale NTS



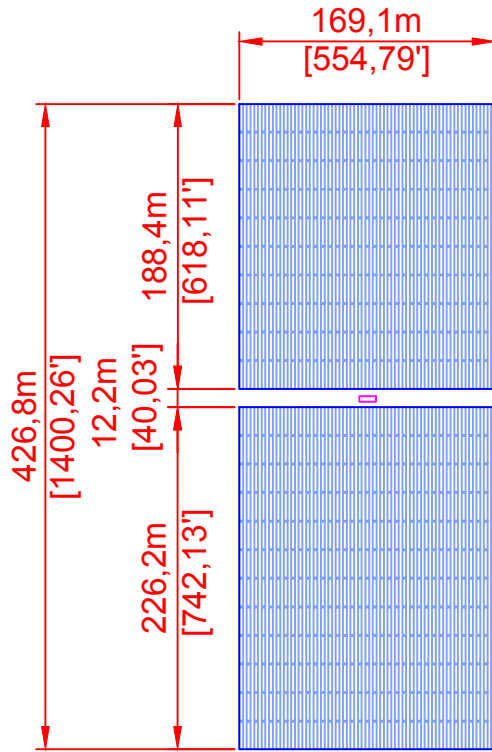
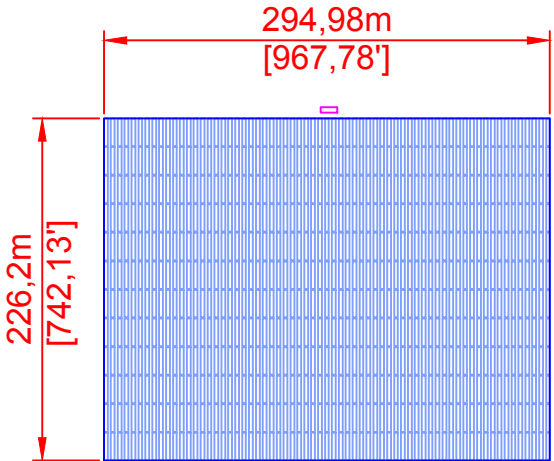
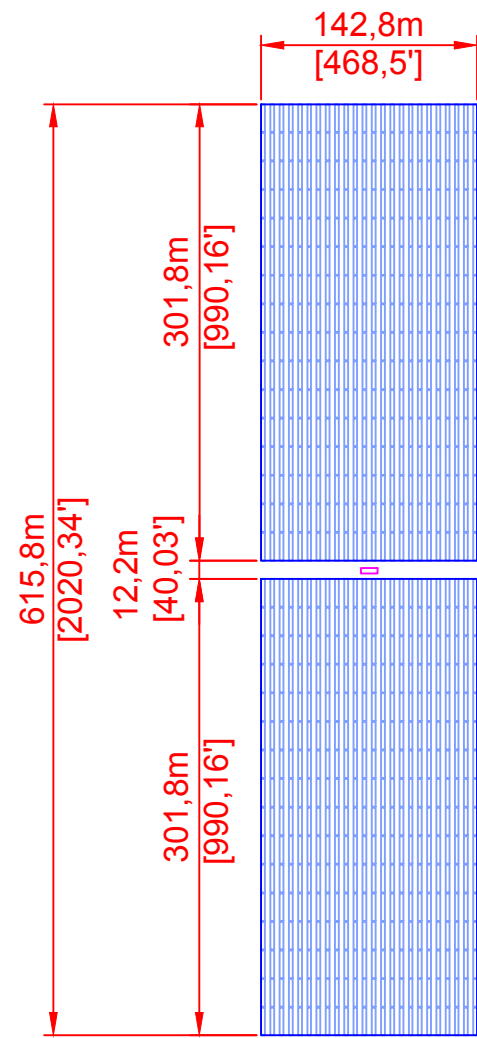
Key Plan
Scale NTS

Site Development Plan
Scale 1:10 000



Legend:

- Project Boundary
- AC Elec. Collection Line (Underground)
- AC Elec. Collection Line (Overhead)
- AC Elec. Distribution / Transmission Line
- Existing Distribution / Transmission Line
- Perimeter Fence
- Proposed Access Road (Dirt)



Beryl Solar Plant

Beryl, New South Wales, Australia

Product Offering

TBD

Project Developer/Owner Operator

First Solar

Project Site Description

303.94 ± Hectare Site
169.24 ± Hectare Array
Latitude 32°21'26" S
Longitude 149°28'17" E
Elevation 420 m

Project Climatic Conditions

ASHRAE Station No. 947270
Extreme Max (50 year) Temp 43.1 °C
Extreme Min (50 year) Temp -7.7 °C
Annual Cooling Design Temp 34.7 °C
Annual Heating Design Temp -2.7 °C (ASHRAE 2013)

Project Design Data

Snow Load Sg=0
Wind Load Region A1, Vr=43m/s
Seismic Load Z=0.08, Kp=0.75

Project Interconnection

66 kV Distribution / Transmission Line to Existing Beryl Substation

Photovoltaic System Parameters

96.45 - MWac System Capacity (Nominal Output)
116.76 - MWdc System Capacity (Nominal Output)

Solar Production

Tracker Mounting System
10° Azimuth
1500 Volt dc PV System Design
33 kV Collection System
66 kV Dist. or Trans. System

| Array | Types | Qty |
|-----------|-------|-----|
| Standard | 3 | 17 |
| Sub-Array | 1 | 1 |
| Custom | 3 | 3 |

Beryl Solar Plant
Beryl
New South Wales
Australia, Australia
95MWac Net Capacity

| REV | DATE | DESCRIPTION | BY | CHK | APP |
|-----|----------|---|----|-----|-----|
| D | 3-17-17 | Revised Capacity | VK | JH | JH |
| C | 2-20-17 | Revised Per Comments | FD | JH | JH |
| B | 11-03-16 | Revised Array Layout | FD | JH | JH |
| A | 10-28-16 | Conceptual Design - Tracker Mounting System | DK | JH | JH |

FS JOB #: 0000-0000-00
PROJ. DSGR: Daiva Kinneman
PROJ. ENGR:
PROJ. MGR:
PROJ. DIR: John Hartelius P.E.
SCALE: AS NOTED

Site Development Plan

SD-100-T

SHEET 1 OF 1

THIS PUBLICATION CONTAINS VALUABLE PROPRIETARY AND CONFIDENTIAL INFORMATION OF FIRST SOLAR, INC. ("FIRST SOLAR") WHO RETAINS ALL COPYRIGHT RIGHTS TO IT UNDER U.S.C. SECTION 106 AND IS PROTECTED BY U.S. AND INTERNATIONAL LAW. ANY REPRODUCTION, PREPARATION OF DERIVATIVE WORKS, DISTRIBUTION, PUBLIC PERFORMANCE OR DISPLAY, DISCLOSURE, AND/OR USE OF ALL OR ANY PORTION OF THIS PUBLICATION IN ANY FORM OR MEDIUM WITHOUT SPECIFIC WRITTEN AUTHORIZATION FROM FIRST SOLAR IS STRICTLY PROHIBITED.